

# PRODUCT DATASHEET

## DP COMPACT 1500 55 W 6500K IP66 GR

DAMP PROOF COMPACT IP66 | Damp-proof luminaire, through-wired (L, N, E)

---

### Areas of application

- Industrial and storage facilities
- Car parks and underpasses
- Garages
- Workshops, assembly lines



---

### Product benefits

- Evenly distributed light
- Energy savings of up to 50 % (compared to luminaires that use fluorescent lamps)
- Easy installation as mounting brackets can be positioned freely on the luminaire
- Easy access to electrical terminal thanks end caps with twist and lock mechanism
- Tool-free electrical connection due to push button connector
- 5 years guarantee

---

### Product features

- High luminous efficacy: up to 120 lm/W
- Type of protection: IP66
- Beam angle: 120°
- Through-wiring 3x1.5mm<sup>2</sup> already installed



- Polycarbonate housing



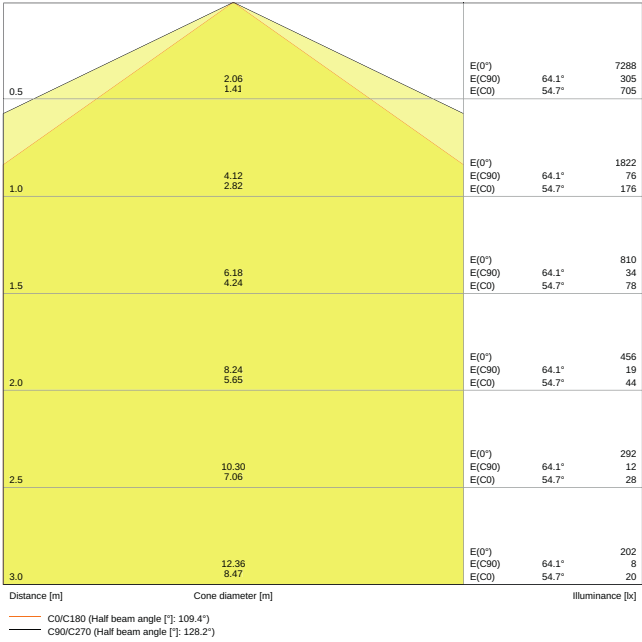
---

**TECHNICAL DATA****Electrical data**

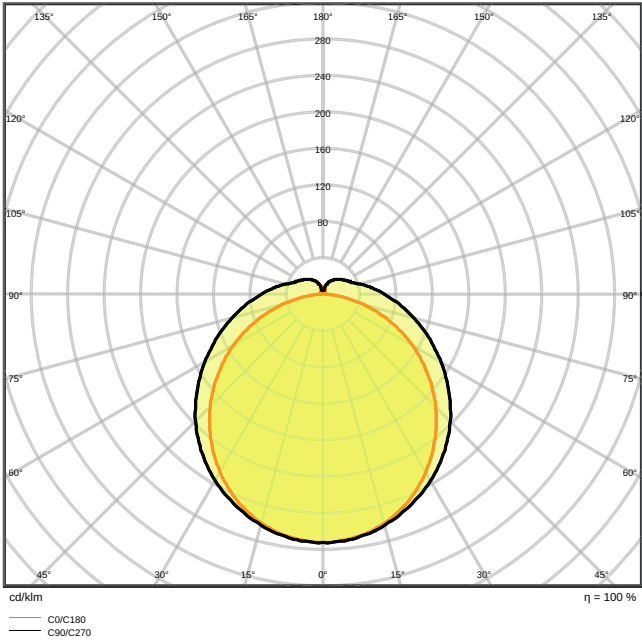
Nominal wattage	55.00 W
Nominal voltage	220...240 V
Mains frequency	50...60 Hz
Nominal current	300 mA
Inrush current	13 A
Inrush current time $T_{h50}$	170 $\mu$ s
Max. no. of lum. on circuit break. B16 A	32
Max. no. of lum. on circuit break. C10 A	26
Max. no. of lum. on circuit break. C16 A	42
Power factor $\lambda$	> 0.90
Total harmonic distortion	20 %
Protection class	II
Operating mode	Integrated LED driver

**Photometrical data**

Luminous flux	6700 lm
Luminous efficacy	120 lm/W
Color temperature	6500 K
Light color (designation)	Cool Daylight
Color rendering index Ra	> 80
Standard deviation of color matching	$\leq 5$ sdc <sub>m</sub>
Luminous intensity	-
Flickering metric (Pst LM)	-
Stroboscope effect metric (SVM)	-
Photobiological safety group acc. to EN62778	RG0
Beam angle	120 °



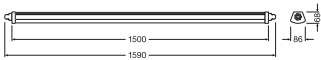
LDC typ cone



LDC typ polar

Dimensions & Weight

Length	1590.00 mm
Width	86.00 mm
Height	68.00 mm
Product weight	1380.00 g



Materials & Colors

Product color	Gray
Housing color	Gray
Body material	Polycarbonate (PC)
Cover material	Polycarbonate (PC)
Light emitting surface material	Polycarbonate (PC)

Glow Wire Test according to IEC 60695-2-12	850 °C
Mercury content	0.0 mg

### Application & Mounting

Ambient temperature range	-35...+50 °C
Temperature range at storage	-40...+70 °C
Type of connection	Screwless terminal, 3-Pole
Type of protection	IP66
Protection class IK (shock resistance)	IK08
Dimmable	No
Mounting type	Suspended/Surface
Mounting location	Ceiling / Wall
LED module replaceable	Not replaceable

### Lifespan

Lifespan L70/B50 at 25 °C	50000 h
Lifespan L80/B10 at 25 °C	35000 h
Lifespan L90/B10 at 25 °C	20000 h
Number of switching cycles	100000



### Certificates & Standards

Standards	CE / CB / TÜV SÜD / EAC / RoHS
Luminaire with limited surface temperature, "D sign"	Yes
Ball shot safe	No

### EQUIPMENT / ACCESSORIES

- Stainless steel clamps with safety screws included
- Mounting accessories included (suspension kit, theft protection kit)

### DOWNLOAD DATA

DOWNLOAD DATA	
	User instruction DAMPPROOF COMPACT IP66
	Tender documents Tender Text 4058075210127



## DOWNLOAD DATA



Declarations of conformity  
EC Declaration of Damp Proof Compact



IES file (IES)  
DP Compact 1500 55W 6500K GR IP66



LDT file (Eulumdat)  
DP Compact 1500 55W 6500K GR IP66



R3D file (Relux 3D Model)  
DAMP PROOF COMPACT 1500



M3D file (3D Model)  
DAMP PROOF COMPACT 1500



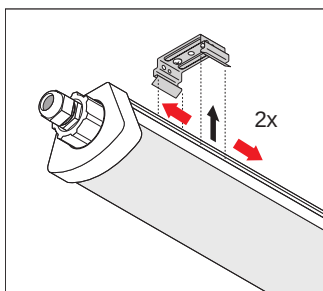
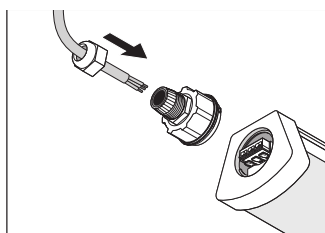
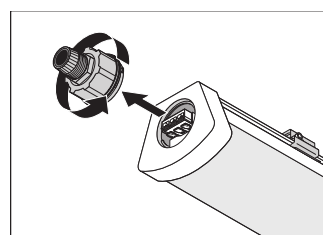
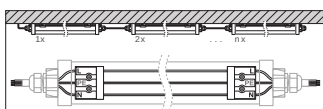
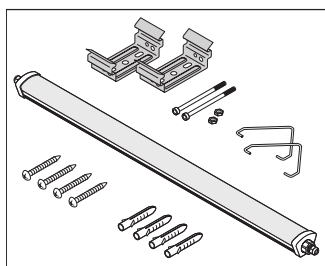
UGR file (UGR table)  
DP Compact 1500 55W 6500K GR IP66

## LOGISTICAL DATA

Product code	Packaging unit (Pieces/Unit)	Dimensions (length x width x height)	Gross weight	Volume
4058075210127	Folding box 1	72 mm x 1,619 mm x 90 mm	1570.00 g	10.49 dm <sup>3</sup>
4058075210134	Shipping box 6	1,640 mm x 200 mm x 240 mm	10035.00 g	78.72 dm <sup>3</sup>

The mentioned product code describes the smallest quantity unit which can be ordered. One shipping unit can contain one or more single products. When placing an order, for the quantity please enter single or multiples of a shipping unit.

## ADDITIONAL CATALOG INFORMATION



---

### References / Links

– For Guarantee see [www.ledvance.com/guarantee](http://www.ledvance.com/guarantee)

---

### DISCLAIMER

Subject to change without notice. Errors and omission excepted. Always make sure to use the most recent release.